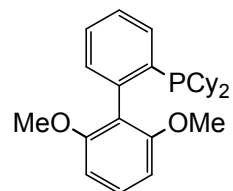


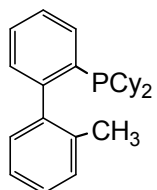
NCI's Buchwald Phosphine Ligands

Ver. 1.0



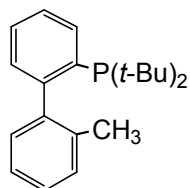
SPhos

Chemical name: 2-Dicyclohexylphosphino-2',6'-dimethoxy-1,1'-biphenyl
CAS No.: 657408-07-6
F.W.: 410.53
Appearance: white to pale yellow xtl.



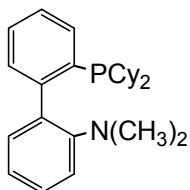
MePhos

Chemical name: 2-Dicyclohexylphosphino-2'-methylbiphenyl
CAS No.: 251320-86-2
F.W.: 364.51
Appearance: white to pale yellow xtl.



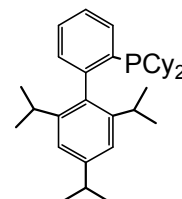
t-Bu-MePhos

Chemical name: 2-Di-t-butylphosphino-2'-methylbiphenyl
CAS No.: 255837-19-5
F.W.: 312.43
Appearance: white to pale yellow xtl.



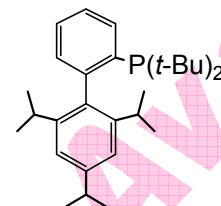
DavePhos

Chemical name: 2-Dicyclohexylphosphino-2'-(N,N-dimethylamino)biphenyl
CAS No.: 213697-53-1
F.W.: 393.55
Appearance: white to pale yellow xtl.



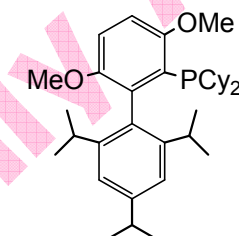
XPhos

Chemical name: 2-Dicyclohexylphosphino-2',4',6'-tri-*i*-propyl-1,1'-biphenyl
CAS No.: 564483-18-7
F.W.: 476.72
Appearance: white to pale yellow xtl.



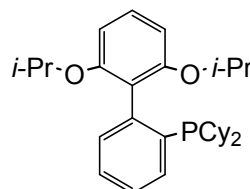
t-Bu-XPhos

Chemical name: 2-Di-t-butylphosphino-2',4',6'-tri-*i*-propyl-1,1'-biphenyl
CAS No.: 564483-19-8
F.W.: 424.64
Appearance: white to pale yellow xtl.



BrettPhos

Chemical name: 2-Dicyclohexylphosphino-3,6-dimethoxy-2',4',6'-tri-*i*-propyl-1,1'-biphenyl
CAS No.: 1070663-78-3
F.W.: 536.77
Appearance: white to pale yellow xtl.



RuPhos

Chemical name: 2-Dicyclohexylphosphino-2',6'-di-*i*-propoxy-1,1'-biphenyl
CAS No.: 787618-22-8
F.W.: 466.64
Appearance: white to pale yellow xtl.

Asia: Nippon Chemical Industrial Co., Ltd.
Specialty Products Sales Department
Sales Division
11-1,9-chome,Kameido,Koto-ku,Tokyo136-8515,Japan
Tel+81-3-3636-8081 Fax+81-3-3636-8132
E-mail : orga.sales@nippon-chem.co.jp

USA, EU: JCI USA, Inc.
1311 Mamaroneck Avenue, Suite145, White Plains, NY 10605
Tel : +1-914-761-6555 Fax : +1-914-761-6940
E-mail : info@jciusa.com

www.nippon-chem.com

